

Welcome



Howe Precision Mold CO., Ltd
Working by heart & profession & innovation...

Since 2011

About us	2
The ways we work on	3
Our services.....	4
Manufacturing Capability	5
Project Management.....	6
Quality Management.....	7
Mold Making	8
Our Equipment	9-10
Injection molding.....	11
Customer & Supplier.....	12-13
Product and mold.....	14-17
Packaging.....	18
Contacts.....	19

Your global OEM Partner

About us

Howe Precision Mold Co. is a qualified engineering and manufacturing company that designs and makes production tools of high-quality injection mold and die-cast mold for plastics molding and metal casting in wide ranges of automotive, household appliances, consumer goods, etc., with an engineering team over 10 average years of experience. Established in Dongguan City China, by the general manager Mr. Shawn Lee with the technical backgrounds.



Committed to providing one-stop services from prototyping through toolings to high-volume product production with competitive price and short lead time based on advanced technologies, scientific management and continuous improvement.

The ways we work on

We always drive flexibility, quick turn on market, competitive price with reliable quality

- Customer orientation: trustiness, understanding, innovation
- Best-of-class project management: expert experience, superior communication, quick response
- Excellent in operation: lowest cost, driven by technology, smart integration
- Easiest to work: reliability, punctuality, quality, systematic way of working
- True collaborator: partnership, working together all the way with extra effort

Team Sprit to deliver solutions, Not questions!!!



Our Services

•Design & Engineering

- Product design from concept
- Mold flow analysis & design for manufacturing (DFM).
- Mold design optimize.

•Prototyping

- 3D printing (SLA, SLS)
- CNC machining
- Rapid tooling within 2 weeks.

•Mold/Tooling Making

- HASCO & DME standard, high quality export mold.
- Multi-cavity mold, up to 128 cavities.
- Multi components/shots mold, insert-mold, over-mold.
- 2 color mold, 3 color mold
- Thread mold, stack mold and other complex structure mold

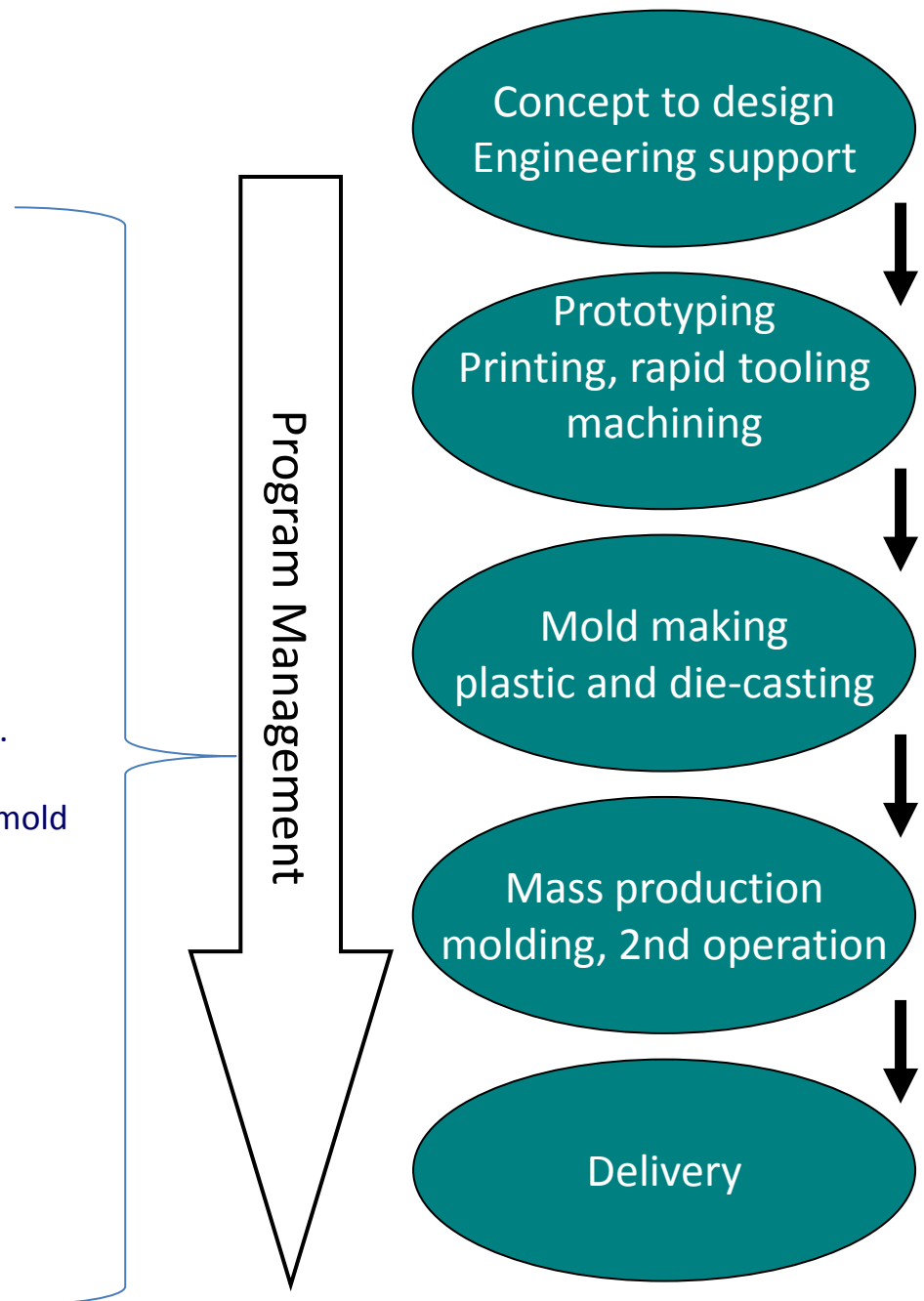
•Molding Production

- Injection molding, compression molding, die-casting
- Machine tonnage: 50T-3600T
- Low & high volume production.

•Second operation, Assembly

- painting line, part assembly.
- pad printing, silk-screen printing and Electroplating

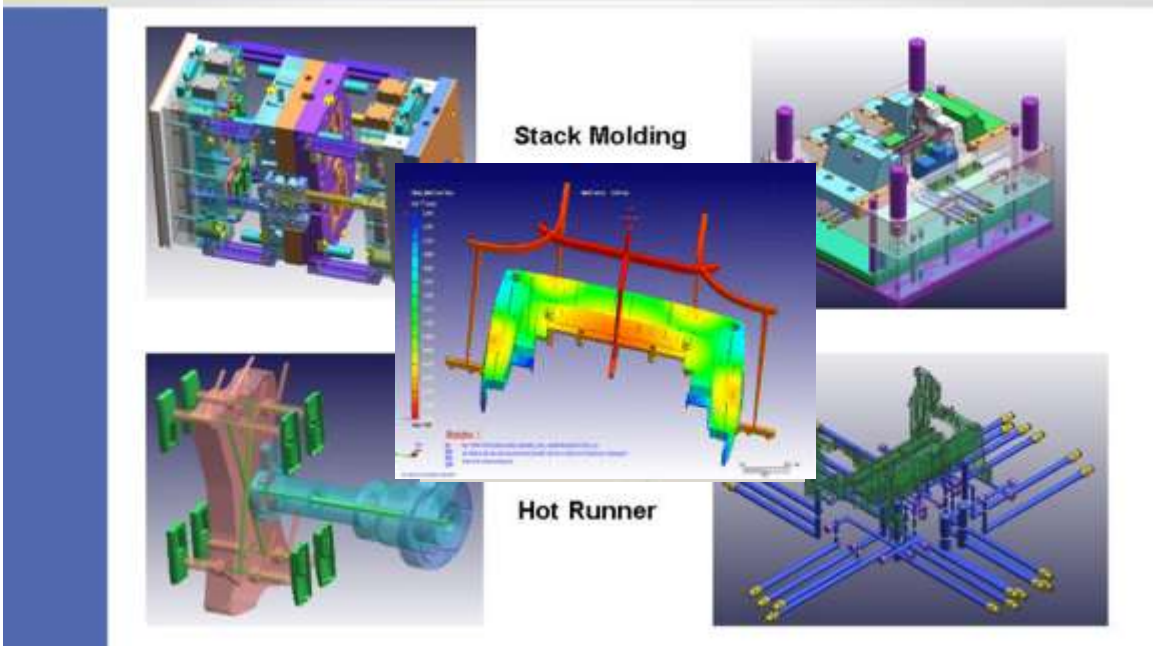
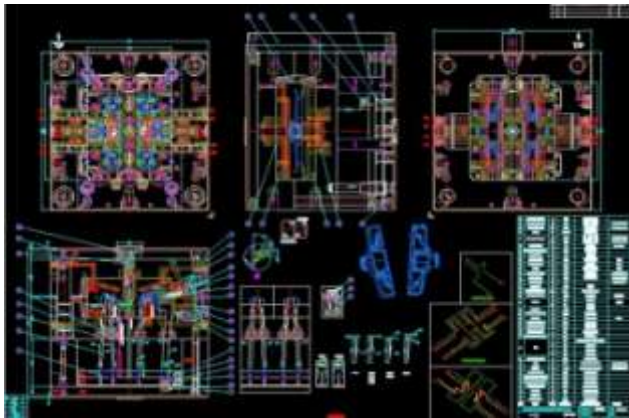
- Delivery:** EXW, FOB, CIF, DOOR TO DOOR .



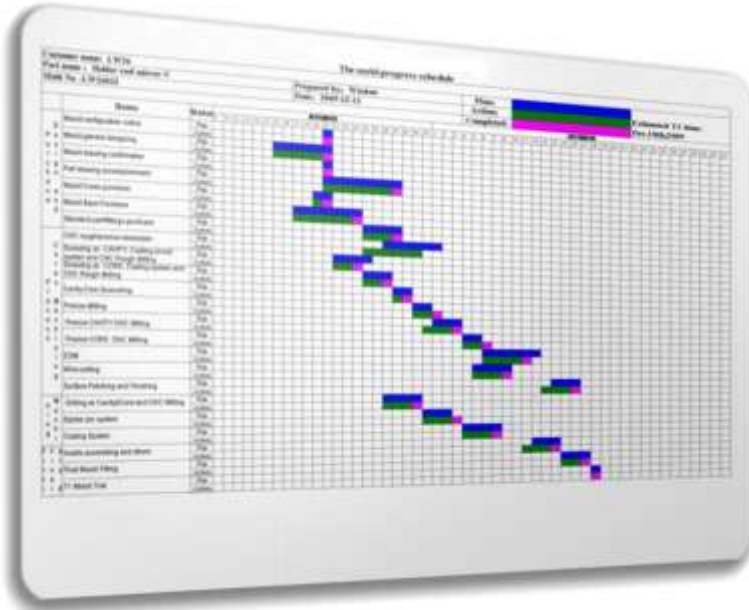
Manufacturing Capability

• Design & Engineering.

1. CAD system: Pro Engineer, Unigraphics, CATIA, Solidworks.
2. CAM system: Unigraphics, MasterCam
3. IGES/STEP/DXF/STL Parasolid conversion capability
4. Provide DFM solutions and discuss with customers about each detail on mold and product so as to generate perfect mold solutions;
5. Service: product design, mold design, moldflow analysis
6. Stable designers over 15 years!

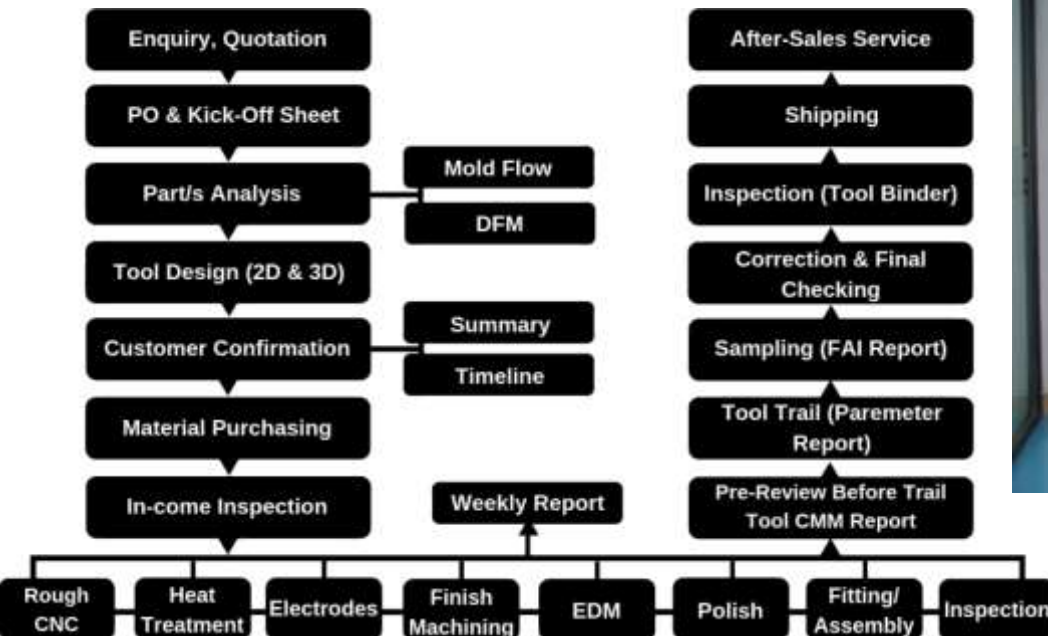


Project Management



“Good communication skill, Quick response, Efficient management” to ensure projects deliver on cost, on quality, on time!

1. Professional project team to manage your projects.
2. Qualified project engineers possesses excellent communication skills.
3. Weekly Schedule report
4. Perfect solution between T0 and volume Production.
5. 5 tooling engineers and 2 Project Engineer



Quality Management

" Good quality control for each process" our team keeps always in mind

- Quality control for each process from design to delivery.
- Experienced employees receiving regular training
- Drive continuous improvement program
- Advanced machining and measuring equipment
- Smart supplier selection and purchasing
- IQC, IPQC, OQC, Perform FAIR (First Article Inspection Report)
- CPK/CMK as well as PPAP, APQP and FMEA on demand



Regular Inspection Facilities:

Caliper gauge , Plug guage, Height gauge, Needle measurer, Marble testing desk, Electrometer



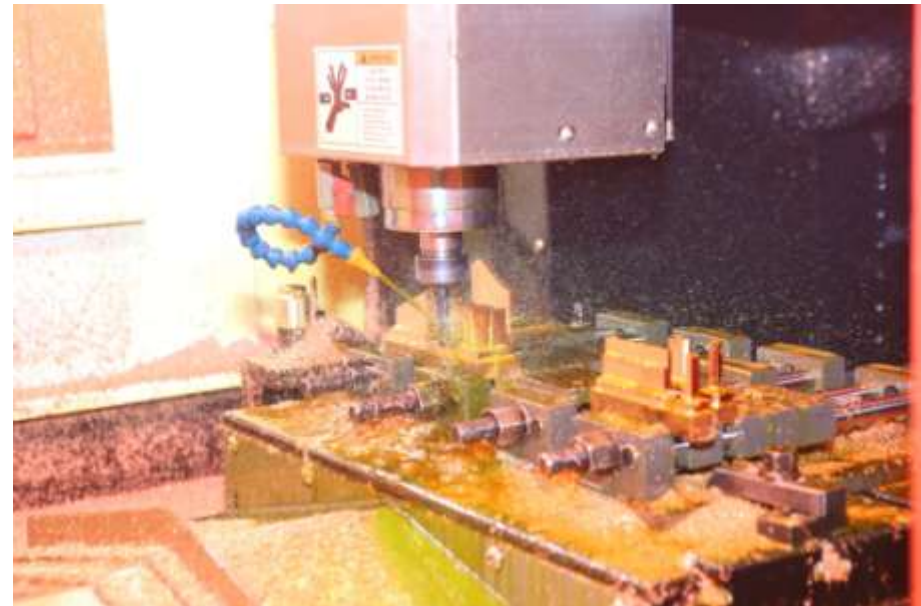
SK4002A High speed image signal measuring facility



Bright Apex504JAPAN Mitutoyo (3D machine)

Mold Making

- Mold standard: HASCO & DME standard, high quality export mold.
- Mold capacity: 50 sets per month.
Single or Multi-cavity mold, up to 128 cavities.
Custom mold, 2/3-shot mold, insert-mold, over-mold, die-casting Mold. Automatic-Remove mechanism.
Max. mold size and wt.: 1800x1200x800, 15Ton.
- Industry served: Automotive, Power tool, industry, home appliance, consumer electronics
- Mold Steel: ASSAB, BOHLUE, LKM, SCHMOLZ-BICKENBACH
Original steel certification & heat treatment certification.
- Hot runner: Moldmaster, Synventive, Guenther, Husky, Incoe, Manner, YUDO
- Mold component: LKM, PUNCH, MITSUMI, PROGRESSIVE, HASCO, DME
- Mold Base: LKM, MINGLEE, FUTABA.
- Cylinder: Parker, Vega or as required





• Our Equipment

- CNC Machines
- EDM machines
- Grinding machines
- Wire-Cut machines
- Lathing machines
- Drilling machines
- Molding machines
- Fitting machines
- Cranes
- Polishing tools
- 3d measuring - CMM,
- 2d measuring - VMS



•Equipment list

CNC machining center	QUASER high speed machine	1020*610*610	±0.005	Germany	1 set
	Taisen Processing Center	1000*600*600	±0.01	China	1 set
	Taisen Processing Center	610*410*400	±0.01	China	1 set
	Taikan Processing Center	850*500*500	±0.01	China	1 set
	Taikan Processing Center	550*400*330	±0.01	China	1 set
2D instrument	Wanhao VMS320	300*200	±0.001	China	1 set
CMM	Zeiss coordinate system CONTURAG2	700*1000*650	1.8+L/300	Germany	1 set
Milling machine	Hong Zhun/073S10	700*800*300	±0.05	Taiwan	1 set
	Youji/MF-B185-SP	900*500*350	±0.05	Taiwan	1 set
	Hengyu/RM-3K	700*800*300	±0.05	Taiwan	1 set
EDM	Topedm ZNC540EDM	500*400*300	±0.01	Taiwan	1 set
	Topedm ZNC540EDM	500*400*300	±0.01	Taiwan	1 set
	Topedm ZNC450EDM	400*350*300	±0.01	Taiwan	1 set
Drilling machine	Dongyue Z3063	800*630*500	±0.10	China	1 set
Grinding machine	Jiande250S	450*150*300	±0.002	China	1 set
	Wanpan 618S	455*150*300	±0.002	China	2 sets
	Fengbao 618S	450*100	±0.002	China	1 set
	Hongzhun618S	450*150	±0.002	China	1 set
Tapping machine	Zhier tapping machine	M3-M16	±0.05	China	1 set
Injection Machine	Fanuc	40T/300T		Japan	12 sets
Crane	Double beam	10T		China	1 set
	Double beam	5T		China	2 sets
	Single-beam	3T		China	1 set
	Single-beam	2T		China	1 set

• Injection molding, second operation & assembly(partner)



- 1) injection machine
- 2) Molder from 15T-2880T
- 3) Part assembly.



Assembly line



Injection department

Our customer

We are a tier 1,2,3 supplier providing services domestically and worldwide to customers in automotive, home appliances, electronics, etc.



Mold System Supplier

■ 钢材供应商 STEEL SUPPLIER FOR



■ 热流道供应商 HOT RUNNER SYSTEM SUPPLIERS FOR



■ 配件供应商 MOULD PART SUPPLIERS



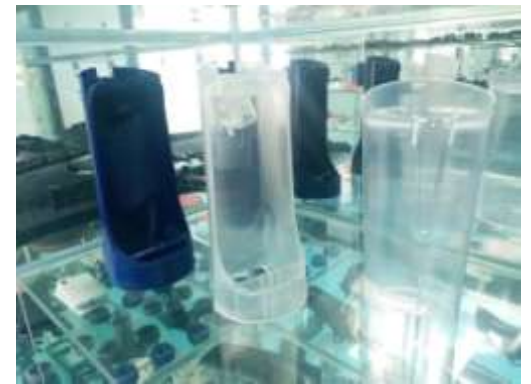
Our Products:

Automotive Industry





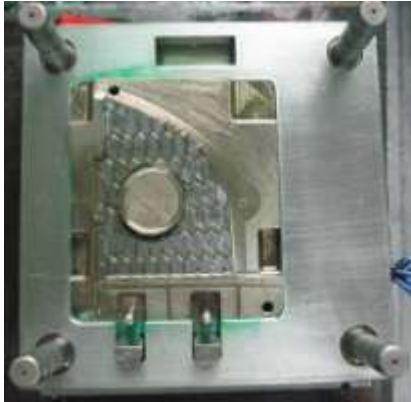
• Industry Case



• Tools & Home Application



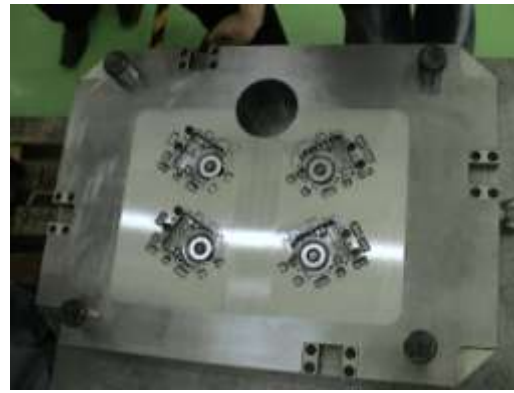
•Exported Molds



Mold for automotive component



Mold for medical part



Mold for Die-Casting



Mold for home appliance

Packaging

Mold package:

1. Clean the set of mold
2. Paint anti-rust oil & grease to inside and outside surfaces.
3. Dry and packing with thin film
4. Place in the plywood or wooden case

Product package:

1. Normal package) Put the product in a PP bag and put them in the carton.
2. Special package) A bubble bag is placed on the product to prevent scratching.
3. Pallet package) Put large products on pallets and ship them together.
4. Can be customized according to customer requirements.



	Mold Inspection&Approval Report
	FAIR (First Article Inspection Report)
	2D Assembly Drawing
	Full 3D Mold Drawing
	BOM & Maintenance list
	Steel Certification
	Heat Treatment Certification
	HRS Specification
	Wiring Diagram

Contacts



Howe Precision Mold Co., Ltd

Welcome to our factory

Your global OEM Partner

Address: No.39 HeXing Road, South ShaTou District, ChangAn,
DongGuan City, GuangDong, 523863 China

Mobile: +86 18591052087 | Tel.:+86 769 85339899 | Fax: +86 769 85339899

E-Mail: jenny@howemold.com

Website: www.howemold.com